



## ACCU 5602

### **PNEUMATIC-ELECTRIC TIRE CHANGER**

SPARE PARTS EXPLODED VIEWS

### **SMONTAGOMME ELETROPNEUMATICO**

TAVOLE PEZZI RICAMBIO

### **DESMONTALLANTAS ELECTRONEUMATICAS**

TABLA DE REPUESTOS

### **DÉMONTÉ-PNEUS ÉLECTRO-PNEUMATIQUE**

FIGURES PIÉCES DE RECHANGE

### **MAQUINA DE MONTAR/DESMONTAR PNEUS ELETRO-PNEUMATIICA**

FIGURAS DAS PEÇAC

### **ELEKTROPNEUMATISCHE REIFENMONTIERMASCHINE**

ERSATZTEILÜBERSICHTEN

**THIS PART IS FOR EXCLUSIVE USE OF QUALIFIED PERSONNEL FOR MAINTENANCE AND SERVICE PURPOSES.**

**QUESTA PARTE È AD USO ESCLUSIVO DEL PERSONALE QUALIFIATO ED AUTORIZZATO ALLA MANUTENZIONE ED ASSISTENZA.**

117-0-001-02 **ESTA PARTE ES PARA USO EXCLUSIVO DEL PERSONAL CALIFICADO Y AUTORIZADO PARA EL MANTENIMIENTO Y LA ASISTENCIA.**

**CETTE PARTIE EST RESERVEE AU PERSONNEL QUALIFIE ET AUTORISE A LA MAINTENANCE ET AU SERVICE APRES-VENTE.**

**ESTA PARTE ES PARA USO EXCLUSIVO POR PESSOAL ESPECIALIZADO ED AUTORIZATO A LA MANUTENÇÃO**

**DIESER ABSCHNITT IST AUSSCHLISSLICH DEM WARTUNGSFACH-UND KUNDENDIENSTPERSONAL VORBEHALTEN**

**DENNE DEL ER BEREGNET TIL BRUK FOR KVALIFISERT PERSONALE FOR VEDLIKEHOLD OG SERVICE**

**DIT GEDEELTE IS ALLEEN BESTEMD VOOR BEVOEGDE PERSONEN VOOR ONDERHOUD EN SERVICE DOELEINDEN**

**DENNA DEL ÄR ENBART TILL FÖR UTBILDAD PERSONAL VID UNDERHÅLLS- OCH SERVICEARBETEN**

**DENNE DEL ER KUN BEREGNET TIL BRUG FOR FAGLÆRTE OG FOLK SOM ER KVALIFICERET OG AUTORISERET TIL VEDLIGEHOLDELSE OG SERVICE**

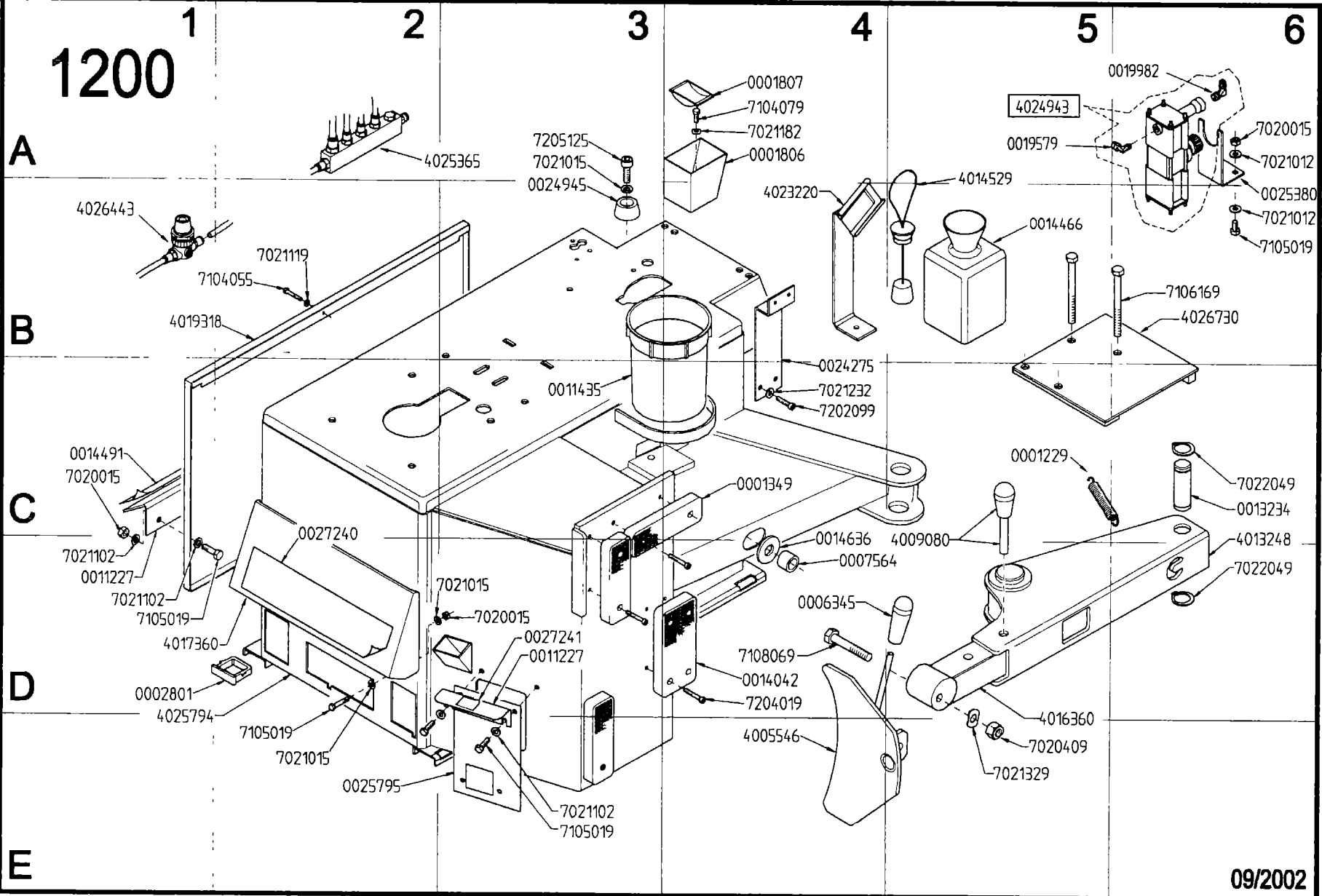
**TÄMÄ OSA ON TARKOITETTU AINOASTAAN VALTUUTETUN HUOLTOHENKILÖSTÖN KÄYTTÖÖN HUOLTOTARKOITUKSIIN**

**AYTO TO MEPOS EINAI GIA THN APOKΛEICTIKH XPHSH EK MEPOYΣ EEOYCIΟΛOTHMENOY IKANOY ΠPOCΩΠIKOY ΓIA EPΓAZIEC CYNTHPHCΗC KAI EΠICKEYHc**



- **On order specify:** type of machine and serial number item code and quantity.
- **All'ordine specificare:** tipo macchina e matricola, codice e quantità del particolare.
- **En cada pedido hay que especificar:** el tipo de máquina y su número de matrícula, el número de código de la pieza requerida y su cantidad.
- **Na encomenda especifique:** tipo da máquina e número de série, código do item e quantidade.
- **A la commande:** bien préciser le type de la machine, le n° de serie, la référence de pièce, la quantité.
- **Bei Auftragserteilung angeben:** Maschinentype, Seriennummer, Artikel-Code, Menge.
- **Specificeer op een order:** machine type en serienummer, artikelnummer en aantal.
- **Vid order specificera:** Maskin typ och serie nr reservdels nr ochantal.

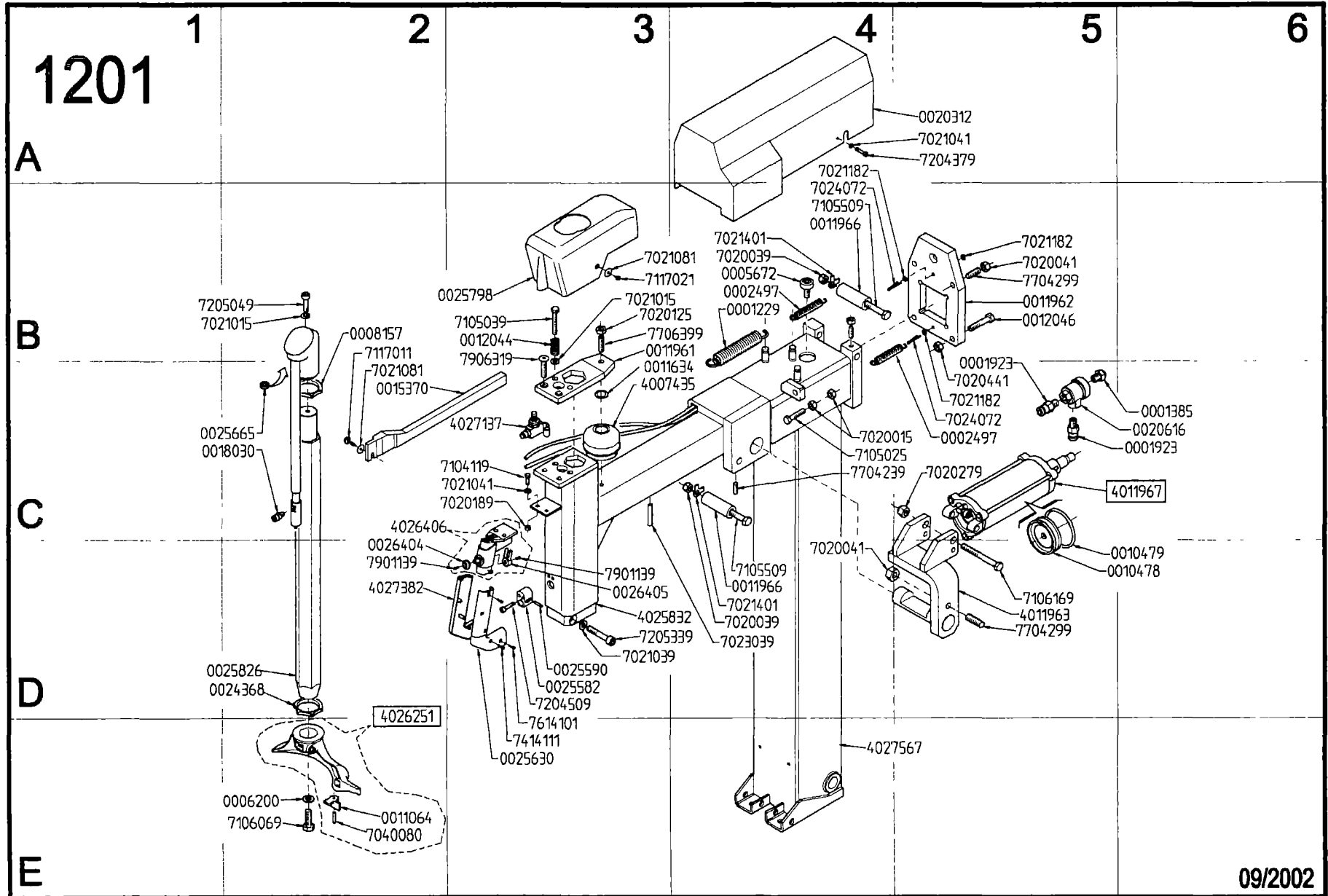
# 1200



20

ACCU 5602

09/2002



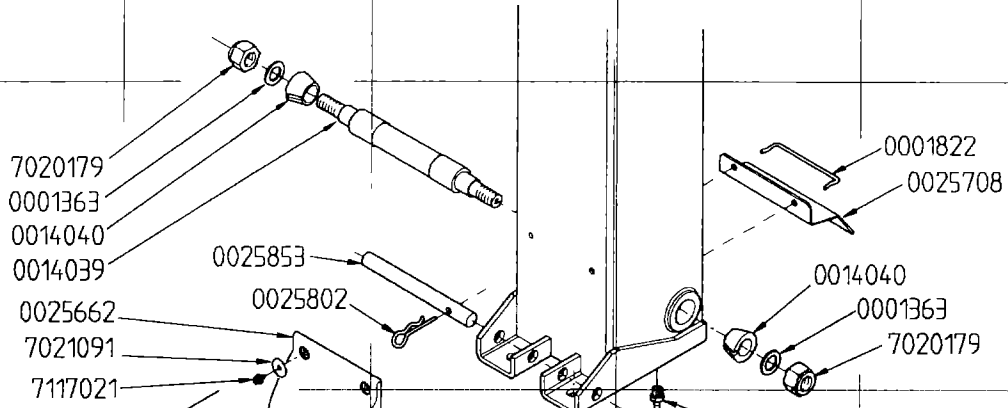
21

ACCU 5602

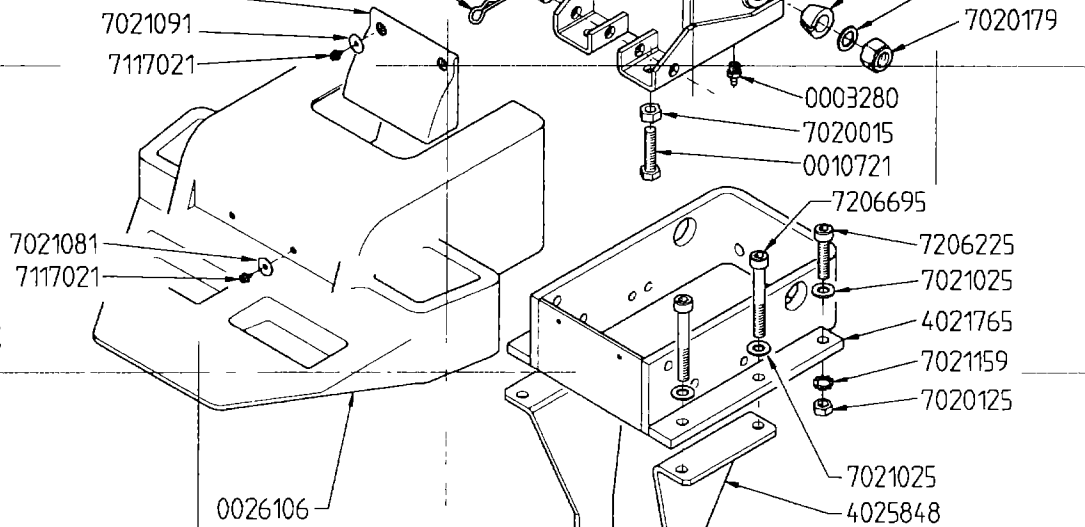
117-0-06-02

# 1084.a

**A**

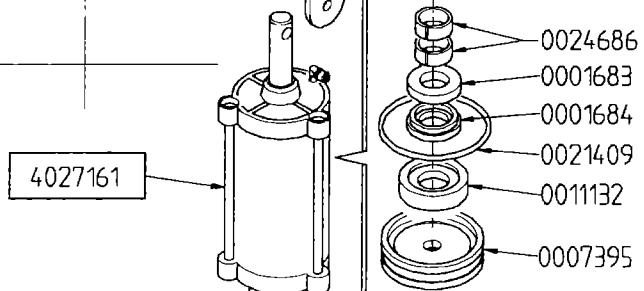


**B**

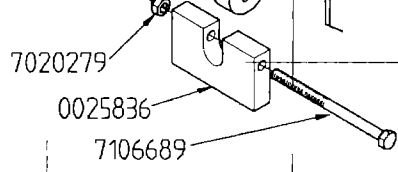


**C**

**D**



**E**

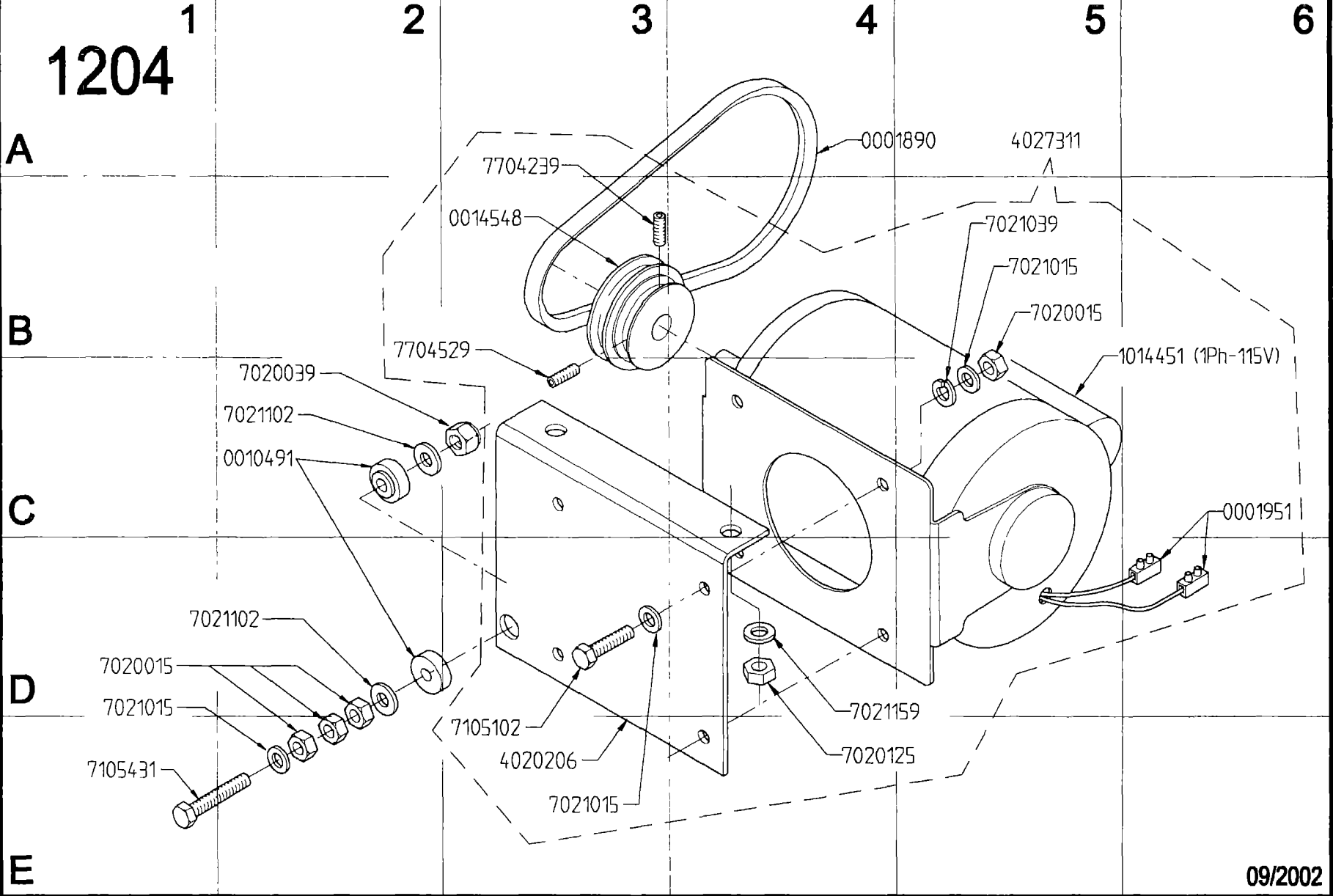


**F**

09/2002



# 1204

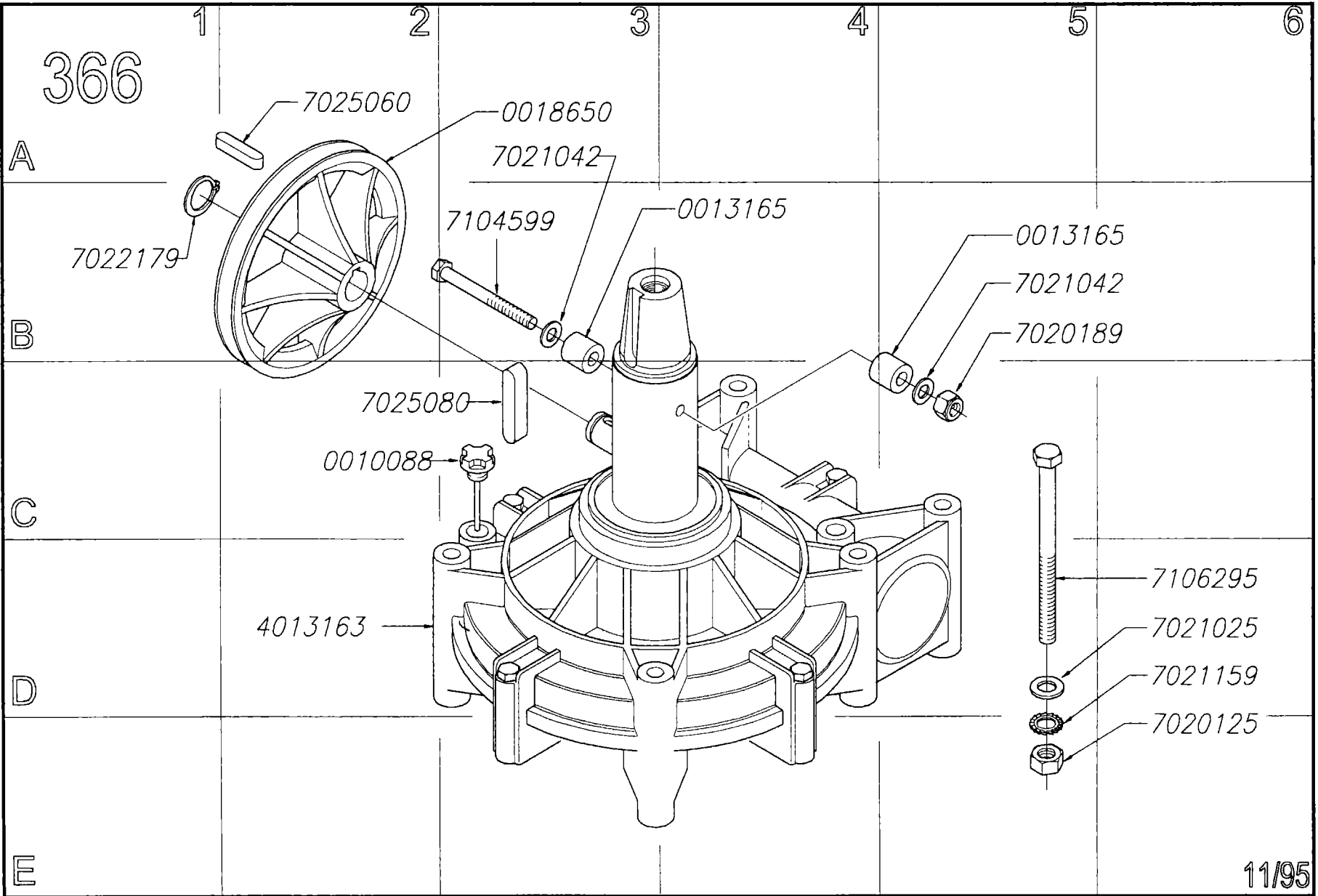


24

ACCU 5602

09/2002

366



25

ACCU 5602



# 351.a

A

B

C

D

E

1

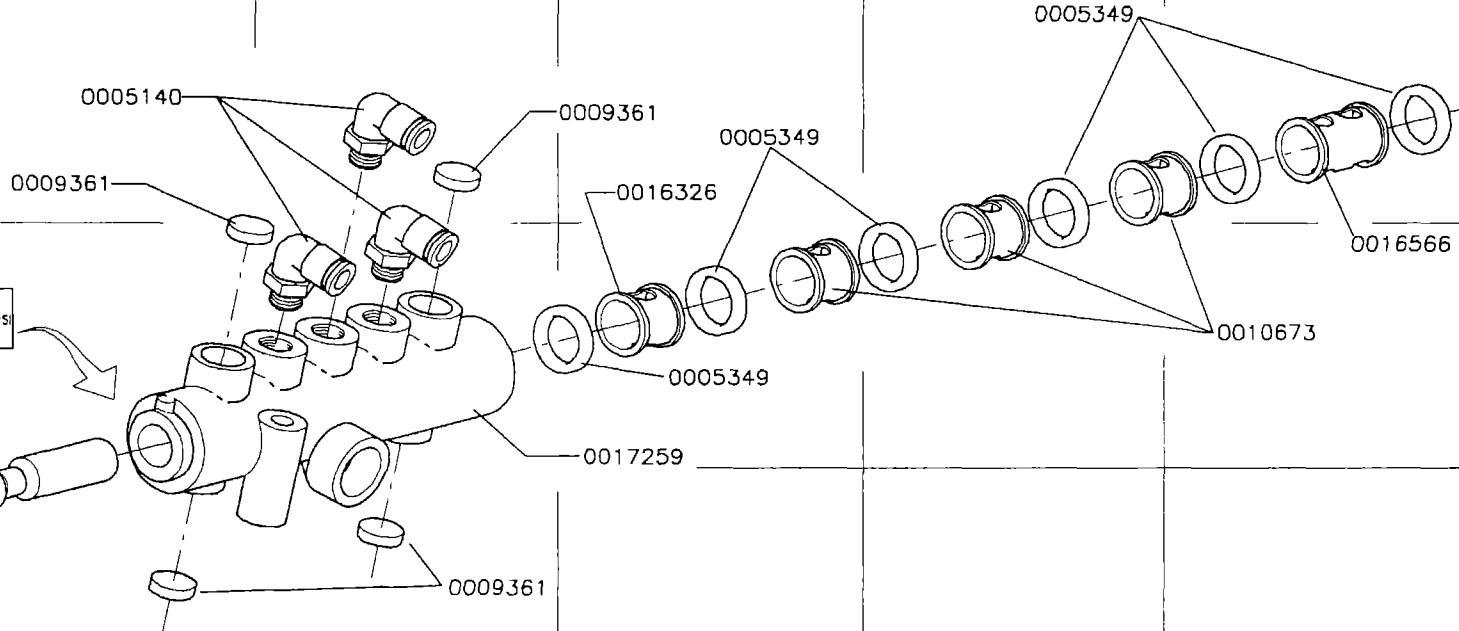
2

3

4

5

6

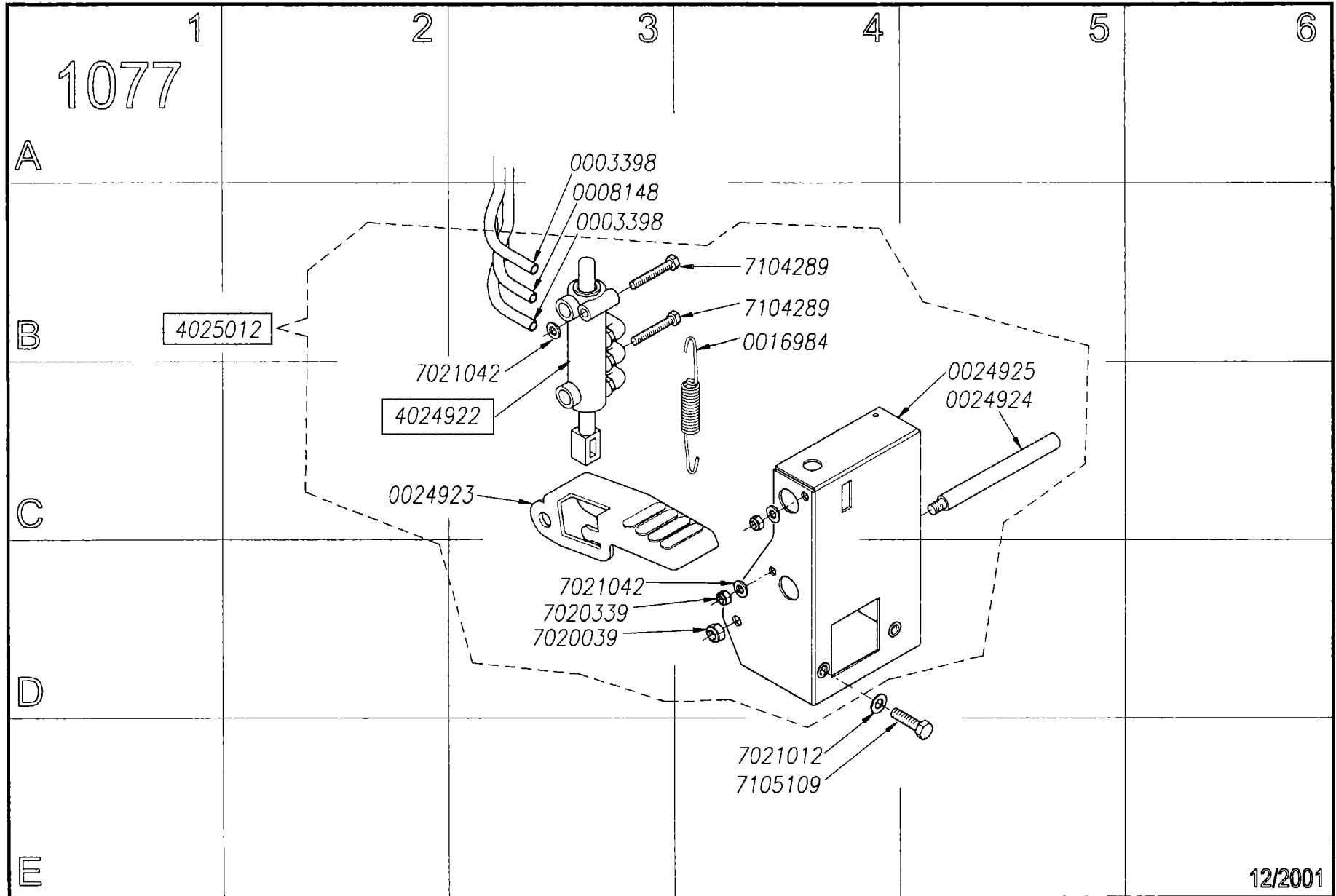


ACCU 5602

## 4017256

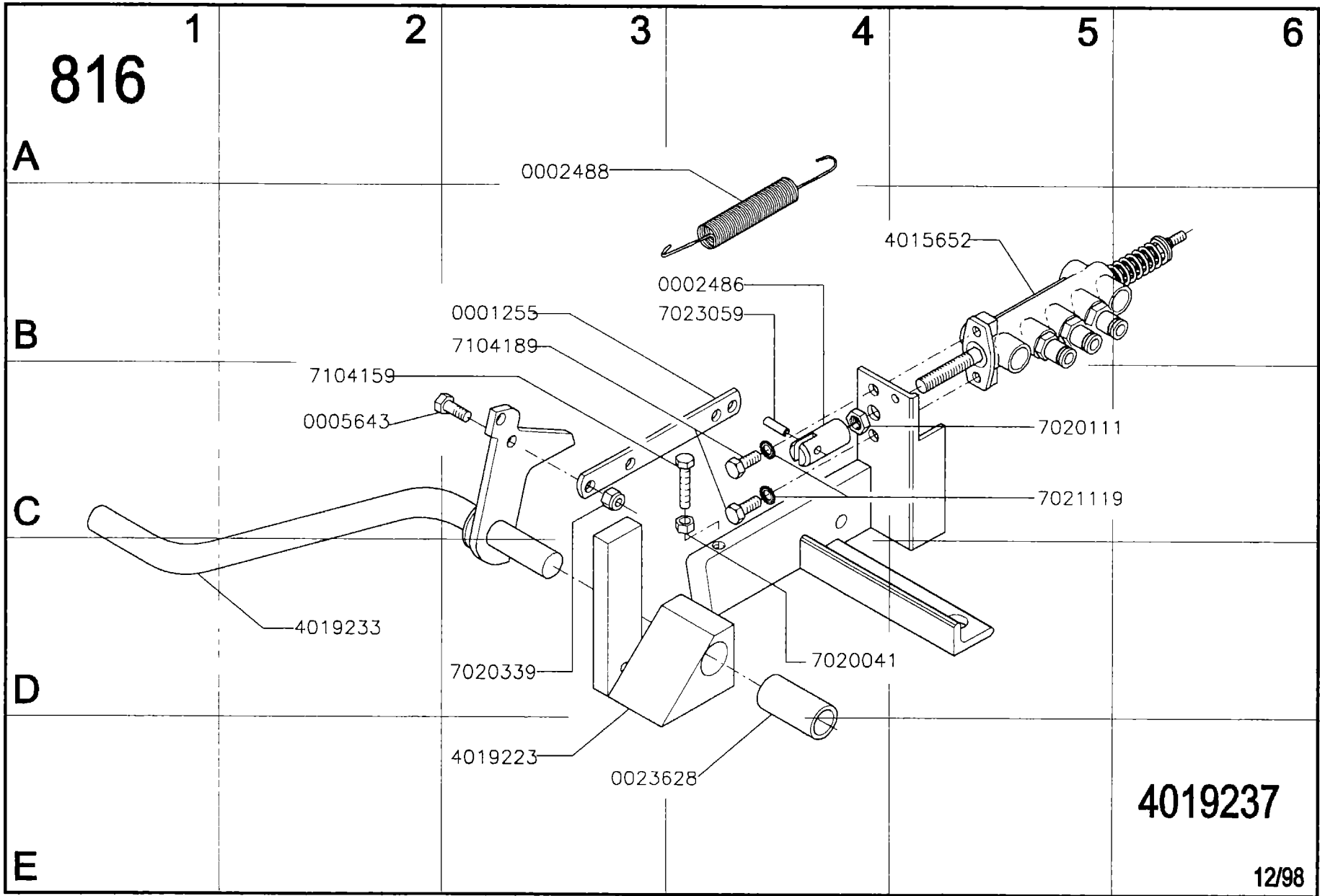
08/2000





29

ACCU 5602



ACCU 5602

4019237

12/98

# 357.a

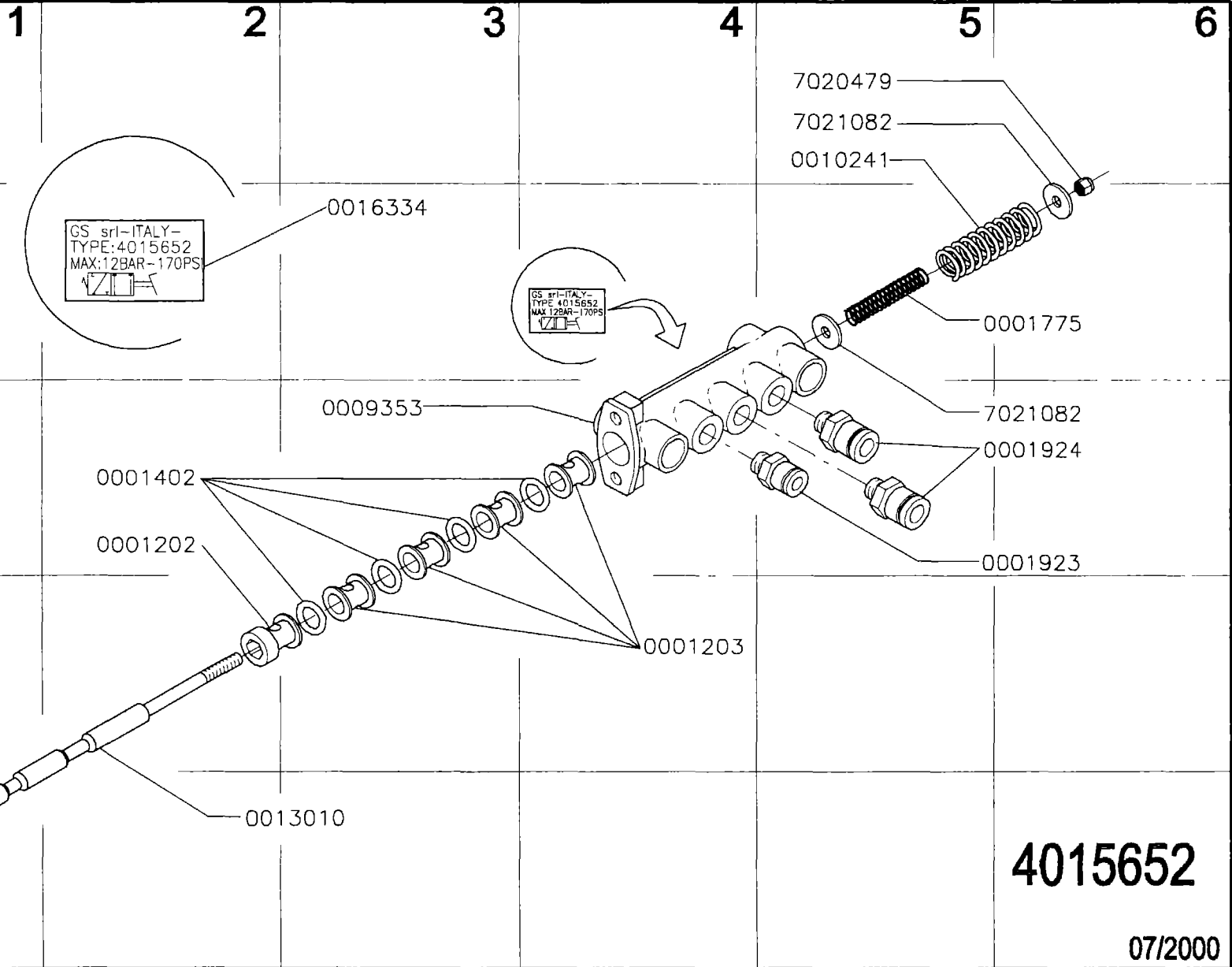
A

B

C

D

E



31

ACCU 5602

## 4015652

07/2000

991

A

B

C

D

E

1

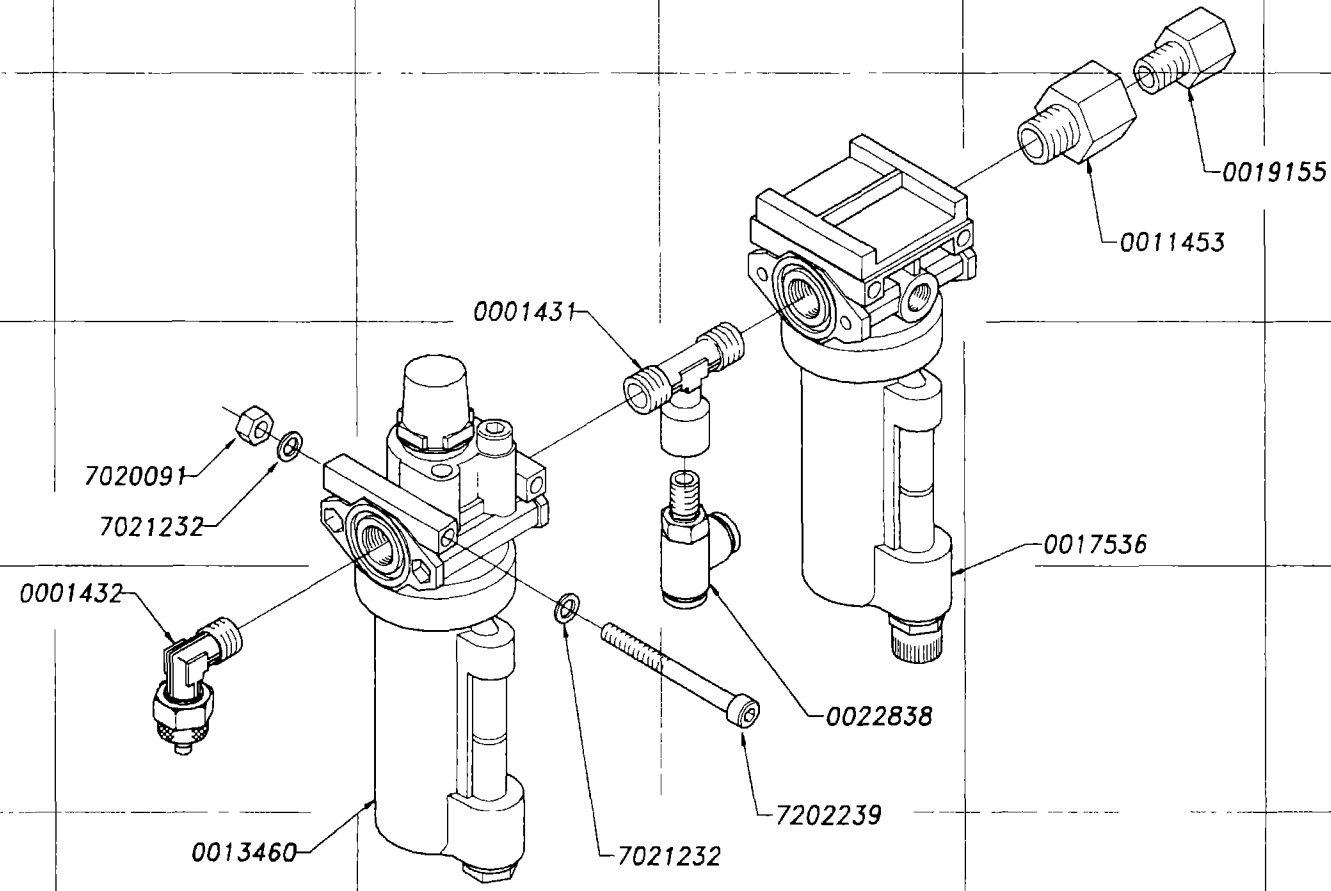
2

3

4

5

6



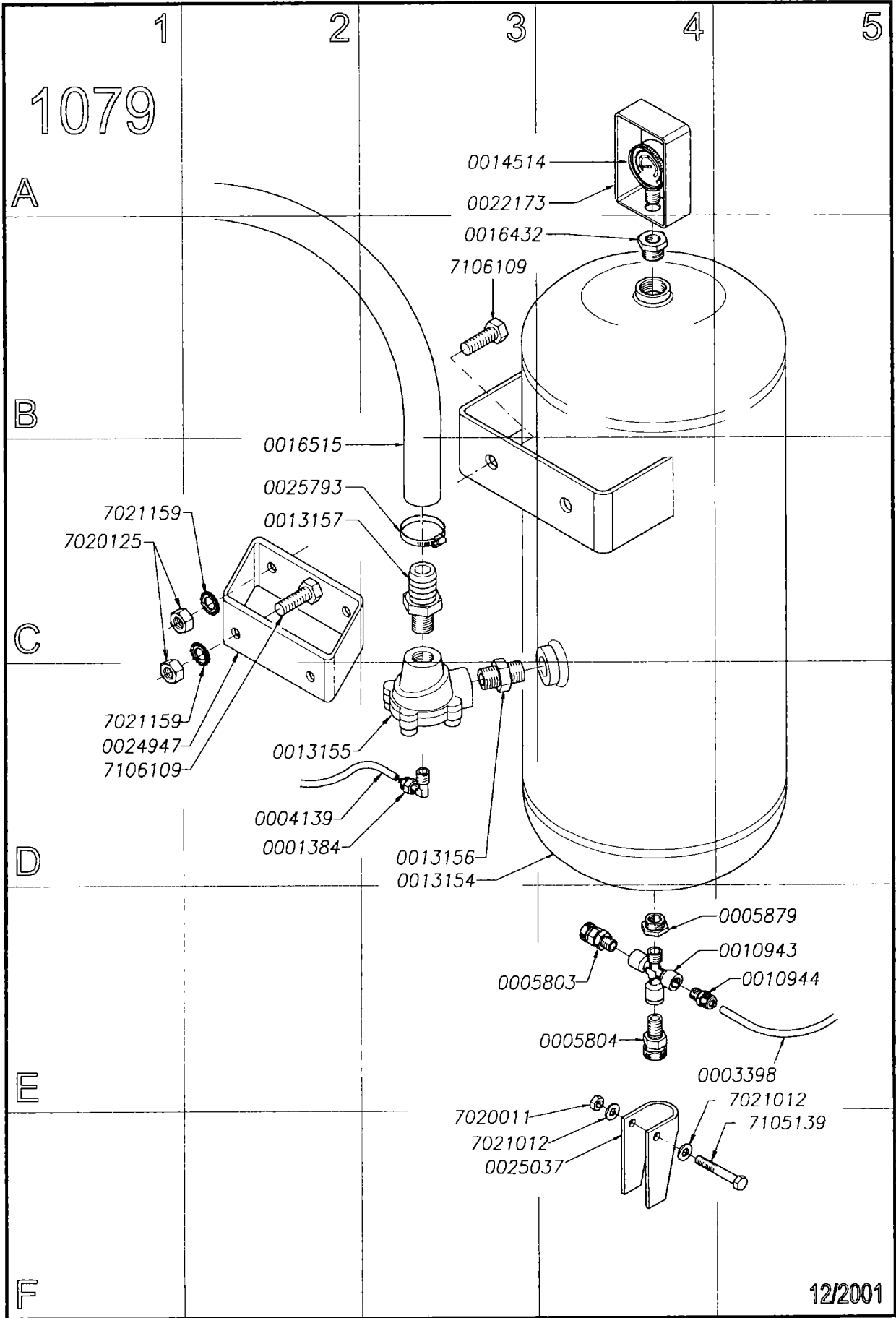
32

ACCU 5602

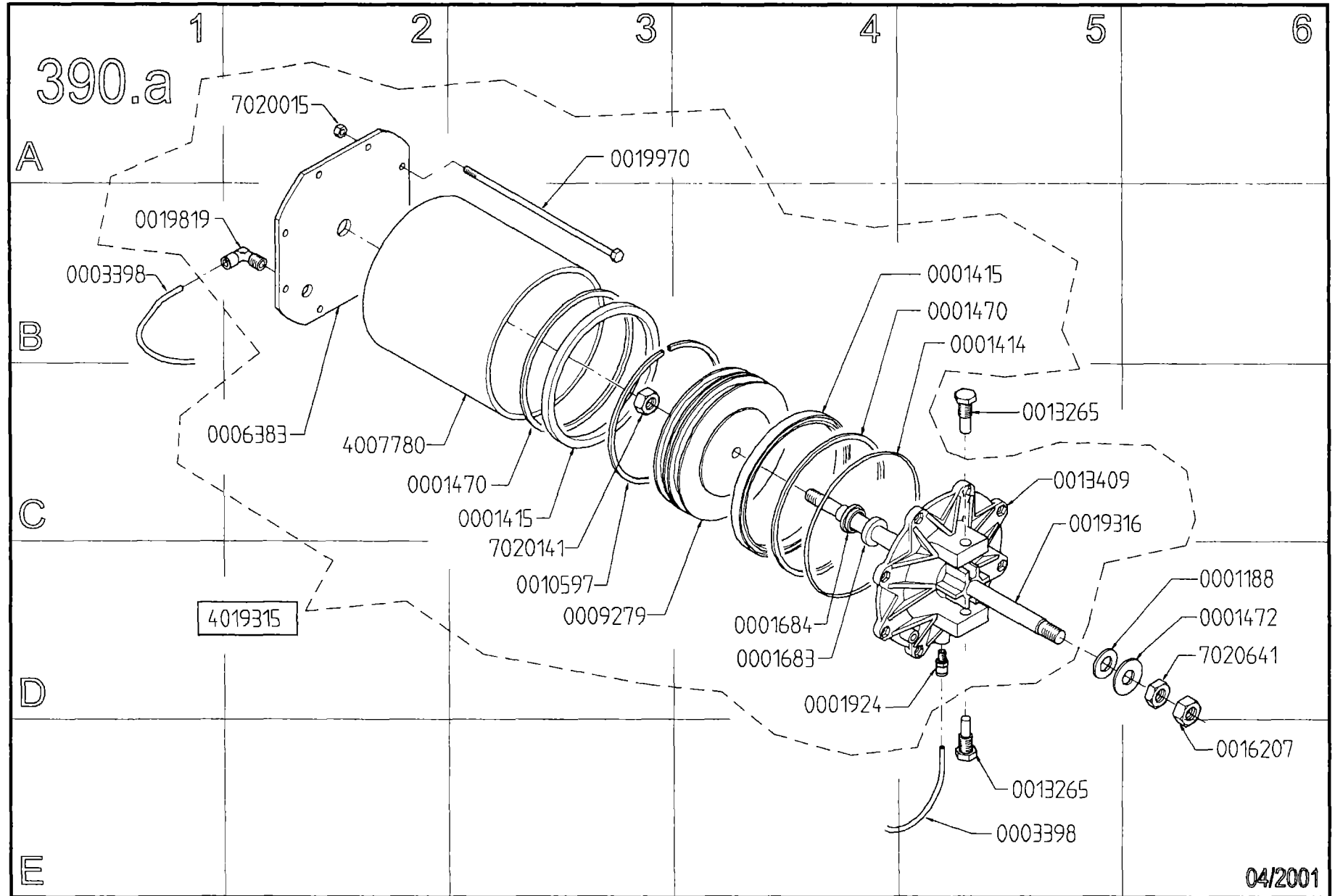
4025419

07/2000

117-0-Dct-02



12/2001

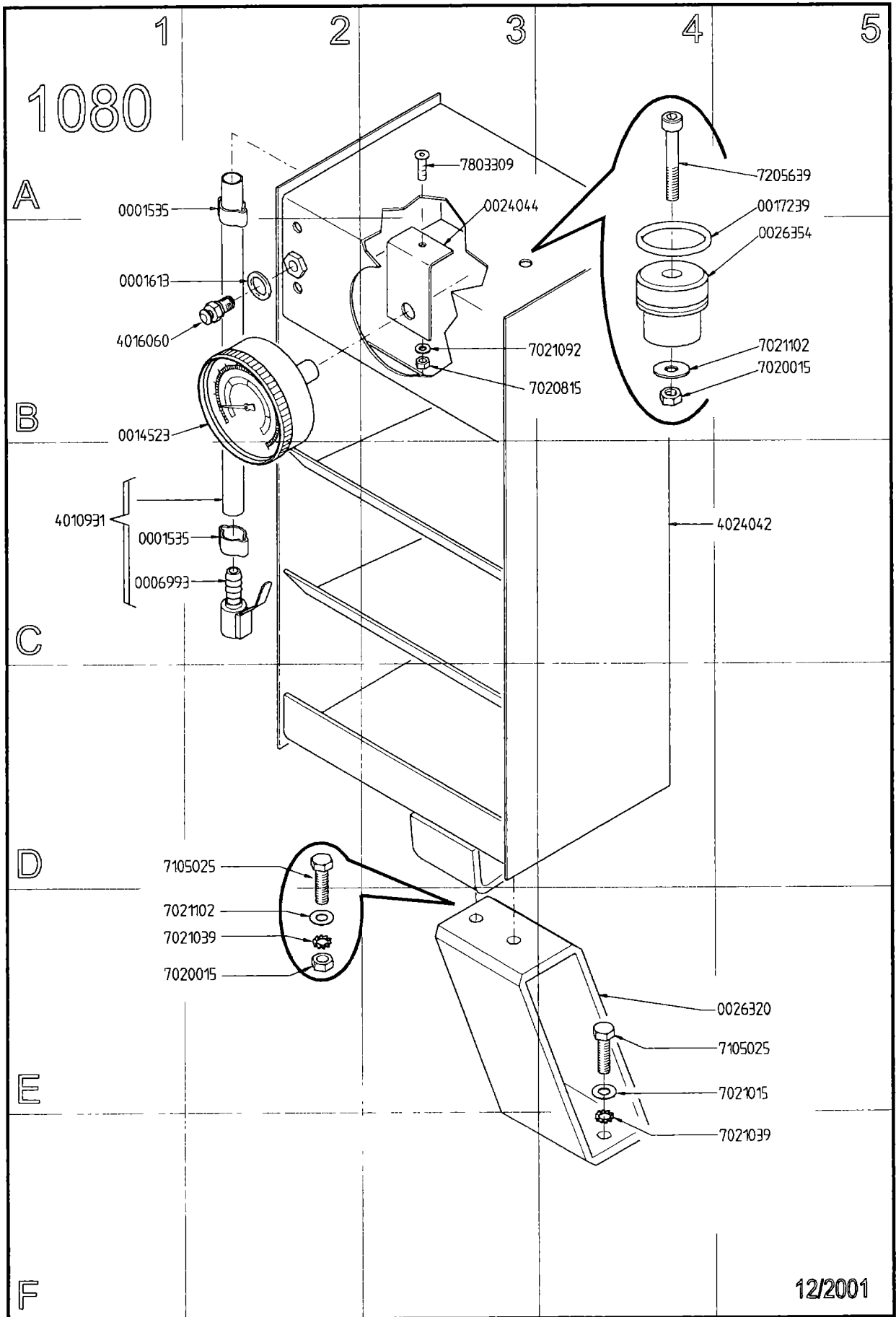


34

ACCU 5602

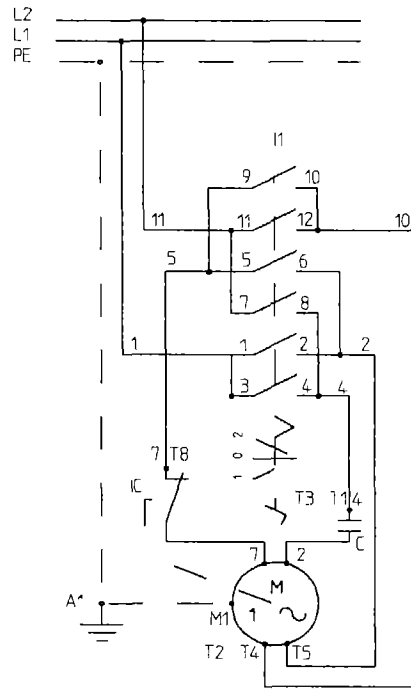
04/2001

117-0-04-02

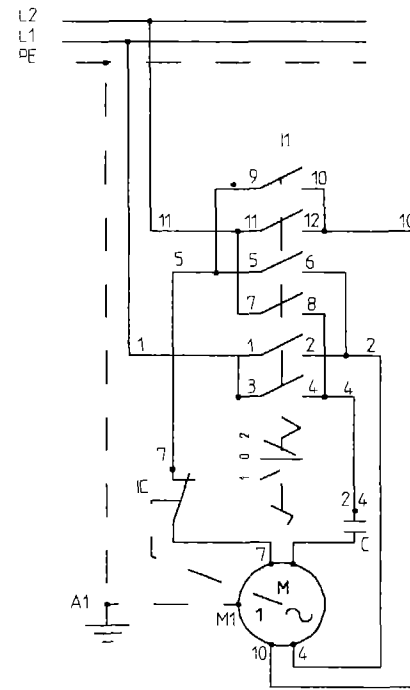


12/2001

3	9-10				
	11-12				
2	5-6				
	7-8				
1	1-2				
	3-4				
			0	2	



MOTORE LEESON  
MOTEUR LEESON  
MOTOR LEESON  
MOTOR LEESON



MOTORE AO SMITH  
MOTEUR AO SMITH  
MOTOR AO SMITH  
MOTOR AO SMITH

SCHEMA COLLEGAMENTO INVERTITORE  
SCHEMA DE CONNECTION DE L'INVERSEUR  
INVERTER CONNECTION DIAGRAM  
WENDEGETRIEBF ANSCHLUSSPLAN

I ALLACCIAMENTO MORSETTIERA MOTORE  
I CONNECTION DES ETALUX DU MOTEUR  
I MOTOR TERMINAL BOARD CONNECTION  
I MOTOR - KLEMMENBRETT ANSCHLUSS

C CONDENSATORE CONDENSATEUR  
IC INT CENTRIFUGO INT CENTRIFUGE  
I1 INVERTITORE INVERSEUR  
M1 MOTORE MOTEUR  
A1 CARCASSA CHASSIS

CAPACITOR KONDENSATOR  
SPINNING SWITCH SCHLEUDERSCHALTER  
REVERSING SWITCH WENDESCHALTER  
MOTOR MOTOR  
FRAME GEHAEUSE

MODIFICA. 1. AGGIORNATO SCHEMA / 19-05-99 / FL  
2. AGGIORNATO SCHEMA PER MOTORE LEESON / 2001-03-12 / PRATIZOLI

MATERIALE	STATO MATERIALE	DIMENSIONI		TRATTAMENTI	HRC
					HB Sh
TOLLERANZE QUOTE LIBERE JS 14 - js 14	SMUSSE E RACCHI NON QUOTATI	PROGETTISTA	DISEGNATORE FUSARI	DATA 1999-05-13	00*4449 DEL 02-11-92
ORIGINE	0.5 mm	VISTO DIR TECNICO		SCALA	SOSTITUISCE IL N
		DESCRIPTION			SOSTITUITO DAL N
	FAMIGLIA 824	PROGETTO 3400		DENOMINAZIONE SCHEMA ELETTRICO MOTORE MONOFASE AMERICANO	ECO SNAP-ON REV
				DS N	0014449



51 52	1 1	TUBO FLESSIBILE SCHLAUCH TUYAU FLEXIBLE FLEXIBLE TUBE		MAZZER MAT PLASTICHE																
48	1	CILINDRO A SEMPLICE EFFETTO EINFACH WIRKENDE ZYLINDER VERIN A SIMPLE EFFET CYLINDER AT SIMPLE EFFECT		GS																
46	1	VALVOLA A 5 VIE FUNFSEITIGE VENTIL VANNE A 5 VOIES FIVEWAY VALVE		GS																
44	1	REGOLATORE DI PORTATA FLOW CONTROL VALVE REGULATEUR DE DEBIT GESCHALTETES STROMREGELVENTIL	RFD-382 RFB-1/8	CAMOZZI AZ PNEUMATICA																
42	1	REDUTTORE REDUKTOR REDUCTEUR REDUCER	R 1/4" 040 12 R	STAMPOTECNICA	77	1	TUBO FLESSIBILE SCHLAUCH TUYAU FLEXIBLE FLEXIBLE TUBE	DEALCARBUR WP 10 BAR											MANULI	
41 43 45 47	1 1 1 1	TUBO FLESSIBILE SCHLAUCH TUYAU FLEXIBLE FLEXIBLE TUBE		MAZZER MAT PLASTICHE	76	1	VALVOLA A COMANDO PNEUMATICO VENTIL MIT PNEUMATISCHEN STEUERUNG VANNE A COMMANDE PNEUMATIQUE VALVE WITH PNEUMATIC DRIVE	1 AF 255/100												KPM
35	1	CILINDRO A DOPPIO EFFETTO DOPPELTWIRKENDE ZYLINDER VERIN A DOUBLE EFFET CYLINDER AT DOUBLE EFFECT		GS	75	1	MANOMETRO MANOMETER MANOMETRE MANOMETER													AREX
32	1	VALVOLA A 5 VIE FUNFSEITIGE VENTIL VANNE A 5 VOIES FIVEWAY VALVE		GS	73	1	SERBATOIO TANK RESERVOIR TANK													GS
31 33 34	1 1 1	TUBO FLESSIBILE SCHLAUCH TUYAU FLEXIBLE FLEXIBLE TUBE		MAZZER MAT PLASTICHE	72		VALVOLA DI SICUREZZA SICHERHEITSVENTIL SOUPAPE DE SECURETE SAFETY VALVE													STMA
27 28	1 1	CILINDRO A DOPPIO EFFETTO DOPPELTWIRKENDE ZYLINDER VERIN A DOUBLE EFFET CYLINDER AT DOUBLE EFFECT		GS	71 74 78	1 1 2	TUBO FLESSIBILE SCHLAUCH TUYAU FLEXIBLE FLEXIBLE TUBE													MAZZER MAT PLASTICHE
22	1	VALVOLA A 5 VIE FUNFSEITIGE VENTIL VANNE A 5 VOIES FIVEWAY VALVE		GS	68	1	TUBO FLESSIBILE SCHLAUCH TUYAU FLEXIBLE FLEXIBLE TUBE	DEAL W.P. 20 BAR 150 R 1307												MANULI
21 23 24	1 1 1	TUBO FLESSIBILE SCHLAUCH TUYAU FLEXIBLE FLEXIBLE TUBE		MAZZER MAT PLASTICHE	67	1	VALVOLA A 2 VIE ZWEISEITIGE VENTIL VANNE A 2 VOIES TWOWAY VALVE													GS
15	1	CILINDRO A DOPPIO EFFETTO DOPPELTWIRKENDE ZYLINDER VERIN A DOUBLE EFFET CYLINDER AT DOUBLE EFFECT		GS	66	1	MANOMETRO MANOMETER MANOMETRE MANOMETER													WIKAC GAV
12	1	VALVOLA A 5 VIE FUNFSEITIGE VENTIL VANNE A 5 VOIES FIVEWAY VALVE		GS	64	1	AIR CONTROL													GS
11 13 14	1 1 1	TUBO FLESSIBILE SCHLAUCH TUYAU FLEXIBLE FLEXIBLE TUBE		MAZZER MAT PLASTICHE	62	1	VALVOLA A 4 VIE VIERSEITIGE VENTIL VANNE A 4 VOIES FOURWAY VALVE													GS
02	1	LUBRIFICATORE SCHMIERVORRICHTUNG LUBRIFIANT LUBRICATOR	L 1/4" 040 PE	STAMPOTECNICA	61 63 65	1 1 1	TUBO FLESSIBILE SCHLAUCH TUYAU FLEXIBLE FLEXIBLE TUBE													MAZZER MAT PLASTICHE
01	1	FILTRO - RIDUTTORE FILTER - REDUKTOR FILTRE - REDUCTEUR FILTER - REDUCER	FR 1/4" C104000	CAMOZZI	53 54	1 1	CILINDRO A SEMPLICE EFFETTO EINFACH WIRKENDE ZYLINDER VERIN A SIMPLE EFFET CYLINDER AT SIMPLE EFFECT													GS
POS	Q TA STUCK Q TE Q TY	DENOMINAZIONE BENENNUNG DESCRIPTION	SIGLA E NORMA TYP UND NORMENBEZEICHNUNG REF ET NORMATIVE REF AND NORM	PRODUTTORE/FORNITORE HERSTELLER/LIEFERANT PRODUCEUR/FURNISSEUR PRODUCER /SUPPLIER	POS	Q TA STUCK Q TE Q TY	DENOMINAZIONE BENENNUNG DESCRIPTION	SIGLA E NORMA TYP UND NORMENBEZEICHNUNG REF ET NORMATIVE REF AND NORM	PRODUTTORE/FORNITORE HERSTELLER/LIEFERANT PRODUCEUR/FURNISSEUR PRODUCER /SUPPLIER											
						COSTRUITO IN FABRIQUE EN MADE IN		FIRMA GEZ SIGNATURE		CLIENTE BESTELLER CLIENT CUSTOMER		GRUPPO GRUPPE GROUPE GROUP		PAGINA BLATT PAGE		N° PAGINE N° DE PAGES N° OF PAGES				
						ITALY		MARIANI						2		2				
						TIPO TYP MODELE MODEL		DATA DATUM DATE		N° ORDINE COMMANDE N° AUFTRAG-N° P.O NUMBER										
						ACCU 5602		2002/09/23												
						CODICE MACCHINA INVENTAR N° MACHINE REF CODE MACHINE		VISTO GEPRIIFT CONTROLE PAR TESTED BY		LISTA COMPONENTI PNEUMATICI LISTE BESTANDTEILE PNEUMATISCHEN LISTE COMPOSANTS PNEUMATIQUES LIST OF PNEUMATIC COMPONENTS		CODICE N° CODE N°		ZEICHNUNGS N°						
												FAMIGLIA 824		0027819						
N°		MODIFICA ÄNDERUNG MODIFICATION CHANGE		DATA DATUM DATE		NOME NAME														



**Accu Industries, Inc.**

P.O. BOX 15540 / RICHMOND, VA 23221  
11126 AIR PARK ROAD / ASHLAND, VA 23005  
804-798-8822 FAX 804-798-6742  
[www.accu-turn.com](http://www.accu-turn.com)

ACCU si riserva di apportare qualunque modifica senza preavviso. Dati tecnici e caratteristiche non impegnativi.  
ACCU se reserva el derecho de introducir cualquier modificación sin preaviso. Los datos técnicos y las características no implican compromiso para la empresa.  
ACCU reserva-se o direito de alterar o design e as especificações sem aviso ou obrigação.  
ACCU reserves the right to change design and specifications without notice or obligation.  
ACCU se réserve le droit d'y apporter des modifications sans préavis.  
ACCU behoudt zich het recht voor zonder voorafgaande kennisgeving wijzigingen aan te brengen. Technische gegevens en specificaties zijn niet bindend.  
ACCU behält sich das Recht auf Änderungen ohne Vorankündigung vor. Technische Daten und Merkmale sind ohne Gewähr.