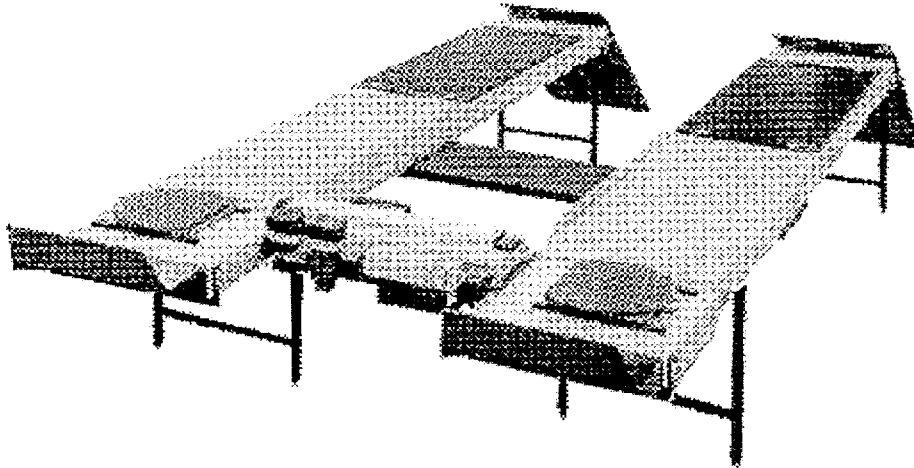


INSTALLATION and OPERATION MANUAL



ALIGNMENT
RUNWAYS

Model AC7514 /
AC7614

(6000 LB.)

**READ and SAVE THIS
INSTRUCTION MANUAL**



Accu International, Inc.

P.O. Box 15540 Richmond, VA 2327
804-798-8922
www.accu-turn.com 1-800-551-2228

MAR. 2000 6-2223

TABLE OF CONTENTS	PAGE
1. GENERAL SPECIFICATIONS	1
2. TOOLS REQUIRED FOR INSTALLATION	1
3. INSTALLATION INSTRUCTIONS	2
- Installation of Single Bolster Unit	2
- Installation of Double Bolster Unit	2
- Installation of Decks	2
- Installation of Rear Tie Bar	3
- Positioning of Decks	3
- Leveling the Decks	3
- Installation of Leveling Legs	3
- Installation of Approach Ramps & Front Wheel Stops	4
- Installation of Turning Radius Plates	4
- Installation of Jack Beam	4
4. PARTS LIST	
- Single Bolster Parts Assembly	5
- Single Bolster Parts Assembly Parts List	6
- Double Bolster Parts Assembly	7
- Double Bolster Parts Assembly Parts List	8
- Air Kit Assembly	9
- Air Kit Parts List	10

1. GENERAL SPECIFICATIONS

SINGLE BOLSTER UNITS

Maximum Capacity:	6000lbs.	2720kg
Overall Length:	221½"	5626mm
Overall Width of Lift:	84"	2134mm
Maximum Wheel Base:	144"	3658mm
Shipping Weight:	1800lbs.	816kg

DOUBLE BOLSTER UNITS

Maximum Capacity:	6000lbs.	2720kg
Overall Length:	231½"	5880mm
Overall Width of Lift:	84"	2134mm
Maximum Wheel Base:	155"	3937mm
Shipping Weight:	2000lbs.	907kg

CHECK CONTENTS OF ACCESSORY BOX WITH THE PACKING LIST ENCLOSED

2. TOOLS REQUIRED FOR INSTALLATION

- Level
- tape measure
- ¾" Allen key
- ¾" socket
- ¾" open face wrench
- 15/16" open face wrench
- 1 1/8" socket or wrench
- 11/16" open face wrench
- 9/16" open wrench
- work horses
- crow bar

3. INSTALLATION INSTRUCTIONS

Note: This instruction refers the rear of the lift as where the approach ramp is attached. The left side as the driver side, and right side as the passenger side.

1. Please take the time to read instructions completely. A quick check of the contents of the accessory box would also decrease the overall time of installation.
2. Gather the tools and materials needed for the installation.
3. Remove the existing arms from the inground cylinders.

INSTALLATION OF SINGLE BOLSTER LIFTS

1. With the cylinders in the down position, place the bolster plate (Item 12) on top of the inground cylinder and align the mounting holes.
2. Install the socket head bolts 7/8"-9UNC x 1 1/2"lg. (Item 22) through the bolster and into the cylinder. Do not tighten at this stage.
3. Install the hex head bolt, 1/2"-13UNC x 2 1/2"lg. (Item 14), with lock washers (Item 15) through the bolster and into the cylinder.
4. Tighten all bolts.

INSTALLATION OF DOUBLE BOLSTER LIFTS

1. With the cylinders in the down position, place the left bolster plate (Item 12) on top of the left inground cylinder and align the mounting holes. NOTE: The mounting pattern for bolting is **NOT** in the center of each plate, that means left and right plates are not interchangeable. The part number is punched on each plate.
2. Install the socket head bolts 7/8"-9UNC x 1 1/2"lg. (Item 22) through the bolster and into the cylinder. Do not tighten at this stage.
3. Install the hex head bolt, 1/2"-13UNC x 2 1/2"lg. (Item 14), with lock washers (Item 15) through the bolster and into the cylinder.
4. Repeat steps 1, 2 and 3 for the right side (Item 43).
5. Align the two bolster plates by checking diagonally to ensure that they are straight. Tighten all bolts.

INSTALLATION OF DECKS

1. Place the two decks (Item 1 and Item 17) on work horses, position decks so that they are perpendicular to the bolster.
2. Raise the inground cylinders until the bolster makes contact with the bottom of the decks.
3. Align holes on the bolster with the matching holes on the decks. Install the hex head bolts, 3/4"-10UNC x 2 1/2"lg. (Item 39) and the lock washers (Item 40) up through the bolster and into the decks. Do not tighten.

INSTALLATION OF REAR TIE BAR

1. Place the rear tie bar (Item 32) under the rear of the decks. The decks fit into the outside of the locating brackets on the rear tie bar.
2. Install the hex head bolts, 1/2"-13UNC x 1 1/2"lg. (Item 6) with flat washers (Item 31) through the brackets on the rear tie bar through the decks. Install lock washers (Item 15) and hex nuts (Item 30). Do not tighten at this stage.
3. Install the hex head bolts, 1/2"-13UNC x 1 1/2"lg. (Item 6) with flat washers 1/2" SAE (Item 33) up through the tie bar and to the decks. Secure them with lock washers (Item 15) and hex nuts (Item 30). Do not tighten at this stage.

POSITIONING OF DECKS

1. Measure to ensure that there is a distance of 36" between the two decks (At the decks, not at the jack beam rails). Measure at the front of the decks and repeat at the rear of the decks. This will ensure that both decks are parallel to each other.
2. Tighten hex head bolts, 3/4"-10UNC x 2 1/2"lg. (Item 39) on the bolster.
3. Tighten hex head bolts, 1/2"-13UNC x 1 1/2"lg (Item 6) on the rear tie bar.

LEVELLING THE DECKS

1. Install hex head bolts, 3/4"-10 UNC x 3"lg. (Item 20) with hex nuts (Item 34) into the bottom of the rear tie bar.
2. Install hex head bolts, 3/4"-10UNC x 6"lg (Item 21) with hex nuts (Item 34) into the bottom of the front of both decks.
3. Raise the lift to remove the work horses and lower the lift. Adjust Item 20 and Item 21 to make contact with the ground. Secure with Item 34.

INSTALLATION OF LEVELLING LEGS

1. Raise the decks to a comfortable working height and install the inside levelling leg bracket (Item 13) with hex head bolts, 1/2"-13UNC x 1 1/2"lg (Item 6), lock washers (Item 15) and hex nuts (Item 30).
2. Install the outside levelling leg bracket (Item 7) with hex head bolts, 1/2"-13UNC x 1 1/2"lg.(Item 6), lock washers (Item 15) and hex nuts (Item 30). Do not tighten.
3. Install levelling leg (Item 4) onto the front of the left side deck using Item 7 and Item 13.
4. Install the levelling leg (Item 38) onto the front of the right side deck in the same manner. Tighten all bolts.
5. Attach the rear levelling legs the same manner as the front with the exception of using the rear tie bar levelling bracket instead of the inside levelling bracket used on the front. Tighten all bolts.
6. Install the locking plungers (Item 5) into each levelling leg.
7. With the levelling leg in the down position, lower the lift and adjust the tap bolts, 5/8"-11UNC x 4"lg. (Item 2) with the ground. Secure with jam nuts (Item 3).

INSTALLATION OF APPROACH RAMPS AND FRONT WHEEL STOPS

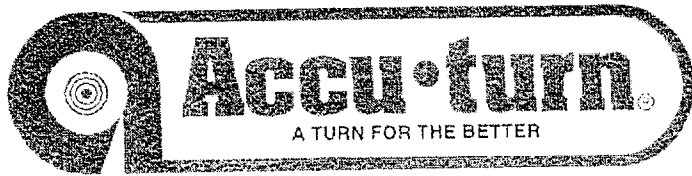
1. Install approach ramps (Item 35) onto the rear of the deck using ramp pins (Item 37). Place flat washers 51/64”I.D. x 1” O.D. x 1/16”thk. (Item 19) on each ramp pin. Install cotter pins (Item 36).
2. Install front wheel stops (Item 18) onto the front of the deck using hex head bolts, 1/2”-13UNC x 1 1/2”lg. (Item 6). Use 1/2” I.D. flat washers (Item 31) on both sides of the deck, as well as lockwashers, 1/2”I.D. (Item 15), and hex nuts, 1/2” - 13UNC (Item 30).

INSTALLATION OF TURNING RADIUS PLATES

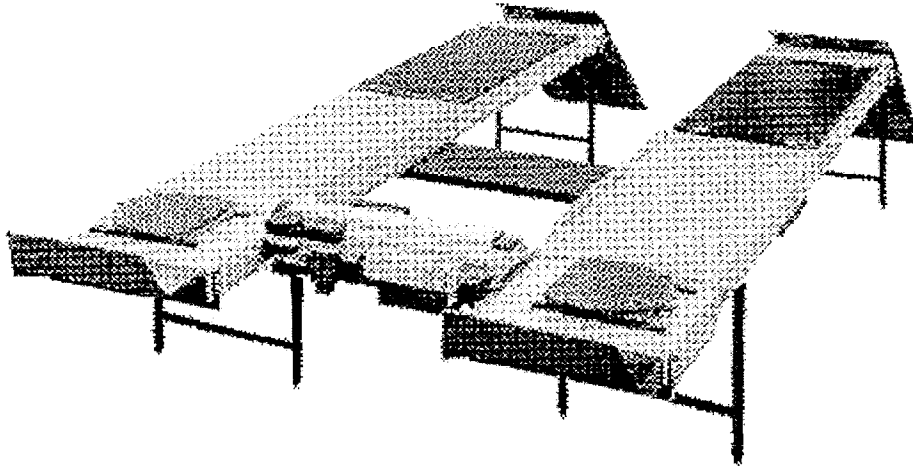
1. Place spacer bars (Item 8) into alignment recess at the front of both decks. Place retaining bars (Item 9) on the top of every spacer bar with the overlap facing in towards each other. Align all holes. Install Hex Head bolts, 1/4”-20UNC x 1 1/4”lg. (Item 11) and lock washer, 1/4”I.D. (Item 10) through items 8 and 9 into the decks.
2. Slide turning radius plate assemblies (Item 16) between spacer bars on both decks.
3. Place level across the top of both radius turning plates, to ensure the decks are leveled.

INSTALLATION OF JACK BEAM

1. Remove keeper plates on both Jack Beams. The Jack Beam with air connect to the left should be placed at the rear of the lift. Be sure that the pump is facing the rear. Rotate the keeper plates 180° and re-install. Connect the recoil hose between the fitting on the rear tie bar and the pump on the Jack Beam.
2. Place the Jack Beam with the air fitting to the right, between the front of the decks. Be sure the pump is facing the front of the lift. Rotate its keeper plate 180° and re-install. Connect the recoil hose between the fitting on the left side deck and the pump on the Jack Beam.



EXPLODED VIEW and PARTS LIST



ALIGNMENT
RUNWAYS

Model AC7514 /
AC7614

(6000 LB.)

**READ and SAVE THIS
INSTRUCTION MANUAL**

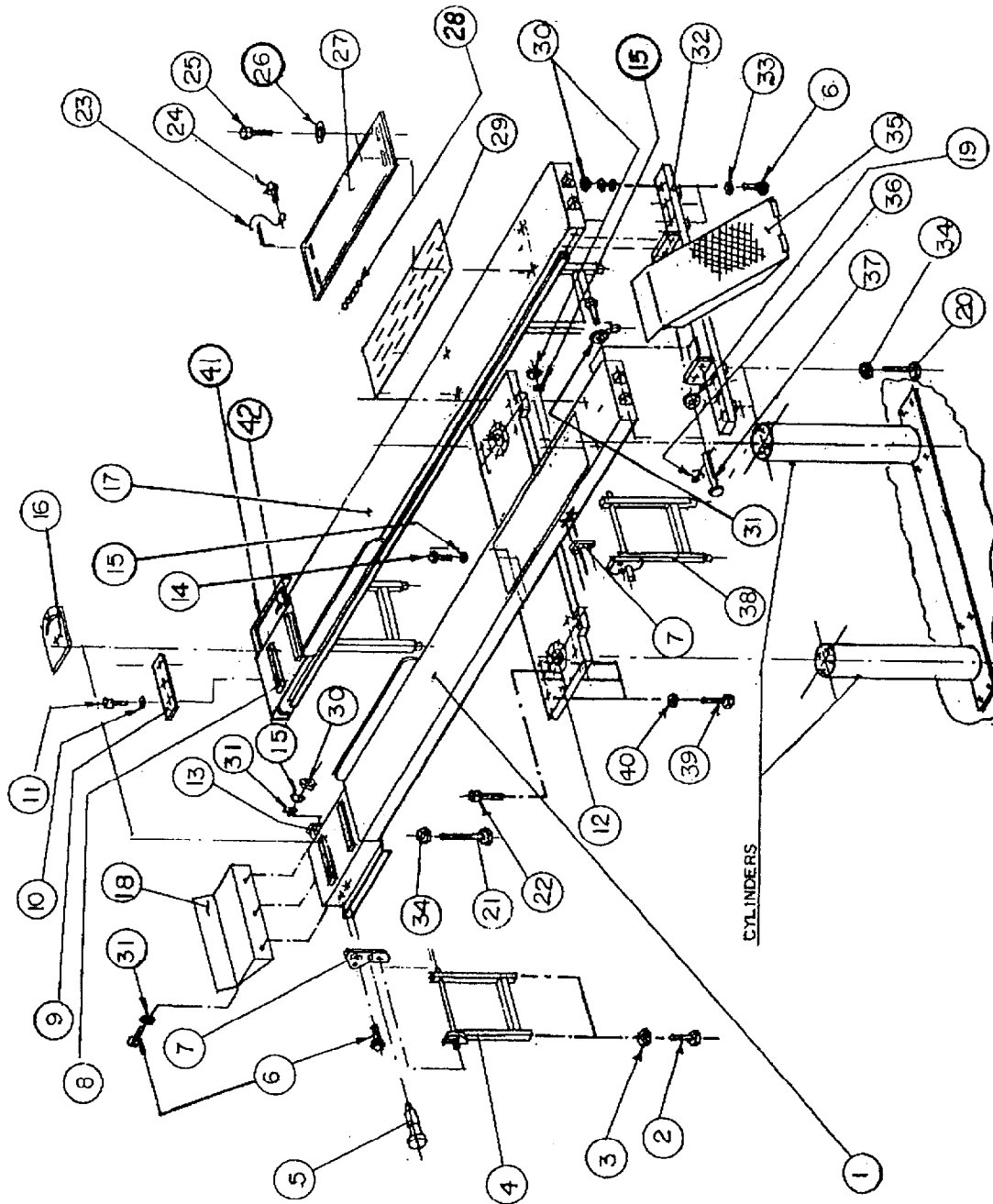


Accu International, Inc.

P.O. Box 15540 Richmond, VA 2327
804-798-8922
www.accu-turn.com 1-800-551-2228

MAR. 2000 6-2223

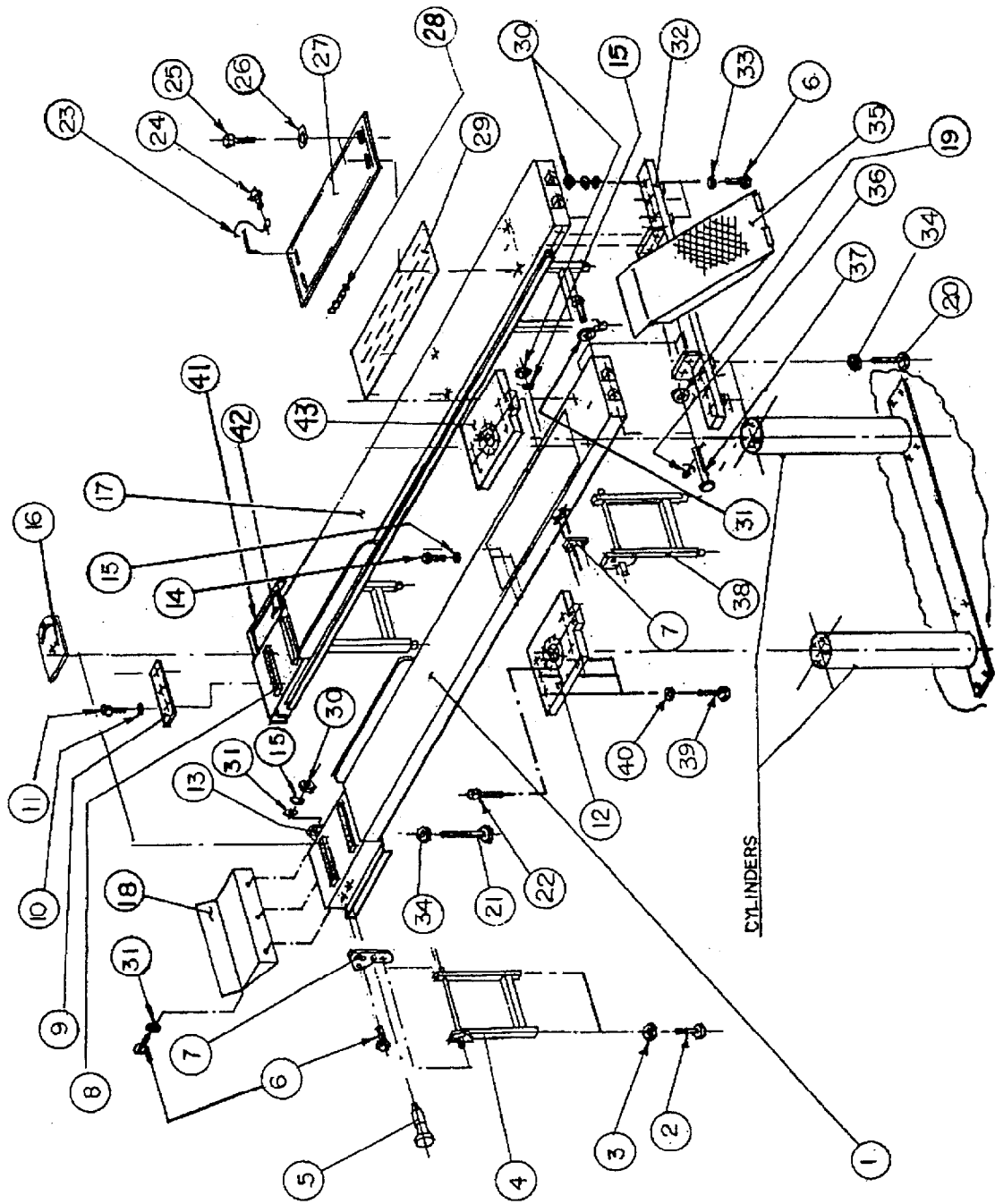
SINGLE BOLSTER PARTS ASSEMBLY



PARTS LIST

ITEM	QTY.	DESCRIPTION	PART #
1	1	ALIGNMENT DECK WELDMENT, LEFT SIDE (144"W/B)	4-0245
2	8	TAP BOLT, 5/8"-11UNC X 4" LG.	6-0049
3	8	JAM NUT, 5/8"-11UNC	6-0039
4	2	LEVELLING LEG, FRONT-LEFT, REAR-RIGHT	3-0248
5	4	PLUNGER ASSEMBLY	2-0086
6	32	HEX BOLT, 1/2"-13UNC X 1 1/2"LG.	6-0291
7	4	LEVELLING LEG BRACKET, OUTSIDE	2-0999
8	4	SPACER BAR	2-0636
9	4	RETAINING BAR	2-0635
10	16	LOCK WASHER, 1/4" I.D.	6-0056
11	16	HEX BOLT, 1/4"-20UNC X 3/4"LG.	6-0178
12	1	ADAPTER TIE BAR (BOLSTER)	4-0304
13	2	LEVELLING LEG BRACKET, INSIDE	2-1000
14	4	HEX BOLT, 1/2"-13UNC X 2 1/2"LG.	6-0767
15	36	LOCK WASHER, 1/2" I.D.	6-0059
16	2	TURNING RADIUS PLATE ASSEMBLY (OPTION)	4-0220
17	1	ALIGNMENT DECK WELDMENT, R.S. (144"W/B)	4-0246
18	2	FRONT WHEEL STOP	2-0851
19	2	FLAT WASHER, 51/64" I.D. X 1" O.D. X 1/16" THK.	6-0808
20	4	HEX BOLT, 3/4"-10UNC X 3"LG.	6-1101
21	8	HEX BOLT, 3/4"-10UNC X 6"LG.	6-1128
22	12	SOCKET HEAD BOLT, 7/8"-9UNC X 1 1/2"LG.	6-1271
23	4	LOCKING PIN ASSEMBLY	2-0637
24	4	SELF TAPPING SCREW, #10 X 1/2"LG.	6-0505
25	8	SHOULDER BOLT, 3/8" X 5/8"LG.	6-0069
26	8	FLAT WASHER, 13/32" I.D. X 2" O.D.	6-0426
27	2	SLIDE PLATE	3-0197
28	1 SET	1/4" DIA. BALL BEARING	6-0829
29	2	BEARING CAGE	3-0196
30	32	HEX NUT, 1/2"-13UNC	6-0035
31	22	FLAT WASHER, 1/2" I.D.	6-0063
32	1	REAR TIE BAR	3-0457
33	10	FLAT WASHER, 1/2" SAE	6-0439
34	12	HEX NUT, 3/4"-10UNC	6-0037
35	2	APPROACH RAMP	3-0506
36	2	COTTER PIN, 1/8" X 2"LG.	6-0115
37	2	RAMP PIN WELDMENT	1-0095
38	2	LEVELLING LEG, FRONT-RIGHT, REAR-LEFT	3-0272
39	12	HEX BOLT, 3/4"-10UNC X 2 1/2"LG.	6-0891
40	12	LOCK WASHER, 3/4" I.D.	6-0181
41	2	PULL OUT STEP ASSEMBLY	2-0362
42	2	SAFETY WALK TAPE	1-0749

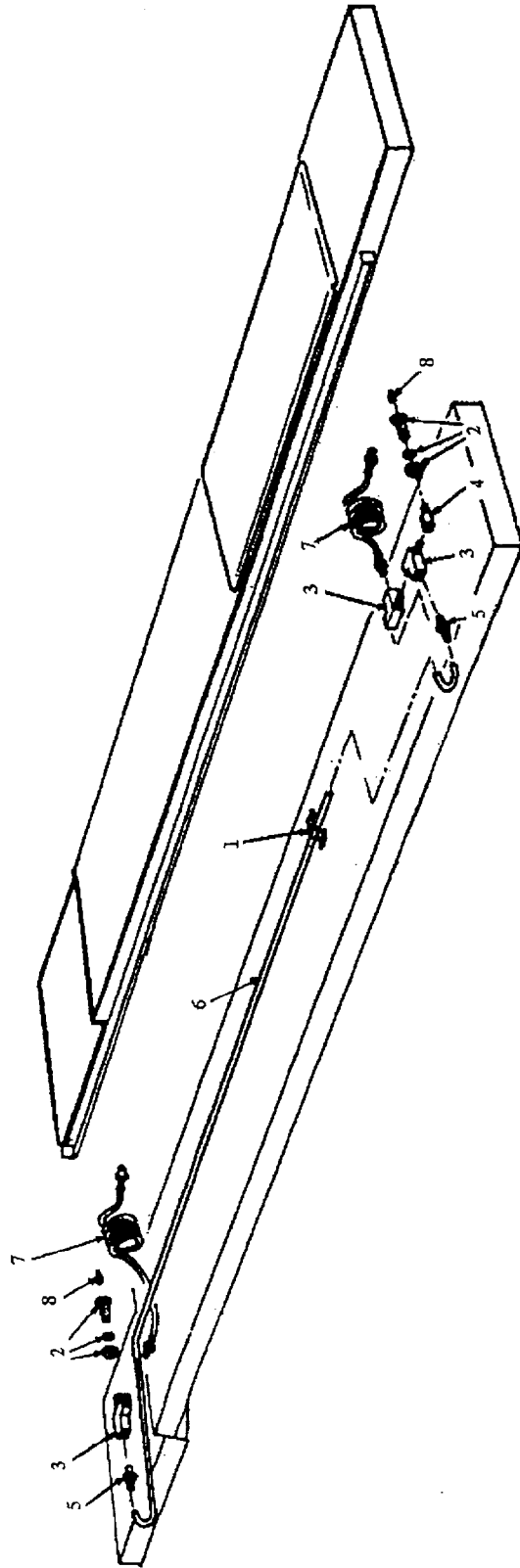
DOUBLE BOLSTER PARTS ASSEMBLY



PARTS LIST

ITEM	QTY.	DESCRIPTION	PART #
1	1	ALIGNMENT DECK WELDMENT, LEFT SIDE (155"W/B)	4-0330
2	8	TAP BOLT, 5/8"-11UNC X 4" LG.	6-0049
3	8	JAM NUT, 5/8"-11UNC	6-0039
4	2	LEVELLING LEG, FRONT-LEFT, REAR-RIGHT	3-0248
5	4	PLUNGER ASSEMBLY	2-0086
6	32	HEX BOLT, 1/2"-13UNC X 1 1/2"LG.	6-0291
7	4	LEVELLING LEG BRACKET, OUTSIDE	2-0999
8	4	SPACER BAR	2-0636
9	4	RETAINING BAR	2-0635
10	16	LOCK WASHER, 1/4" I.D.	6-0056
11	16	HEX BOLT, 1/4"-20UNC X 3/4"LG.	6-0178
12	1	ADAPTER TIE BAR, LEFT SIDE	2-1001
13	2	LEVELLING LEG BRACKET, INSIDE	2-1000
14	4	HEX BOLT, 1/2"-13UNC X 2 1/2"LG.	6-0767
15	36	LOCK WASHER, 1/2" I.D.	6-0059
16	2	TURNING RADIUS PLATE ASSEMBLY (OPTION)	4-0220
17	1	ALIGNMENT DECK WELDMENT, R.S. (155"W/B)	4-0331
18	2	FRONT WHEEL STOP	2-0851
19	2	FLAT WASHER, 51/64" I.D. X 1" O.D. X 1/16" THK.	6-0808
20	4	HEX BOLT, 3/4"-10UNC X 3"LG.	6-1101
21	8	HEX BOLT, 3/4"-10UNC X 6"LG.	6-1128
22	12	SOCKET HEAD BOLT, 7/8"-9UNC X 1 1/2"LG.	6-1271
23	4	LOCKING PIN ASSEMBLY	2-0637
24	4	SELF TAPPING SCREW, #10 X 1/2"LG.	6-0505
25	8	SHOULDER BOLT, 3/8" X 5/8"LG.	6-0069
26	8	FLAT WASHER, 13/32" I.D. X 2" O.D.	6-0426
27	2	SLIDE PLATE	3-0197
28	1 SET	1/4" DIA. BALL BEARING	6-0829
29	2	BEARING CAGE	3-0196
30	32	HEX NUT, 1/2"-13UNC	6-0035
31	22	FLAT WASHER, 1/2" I.D.	6-0063
32	1	REAR TIE BAR	3-0457
33	10	FLAT WASHER, 1/2" SAE	6-0439
34	12	HEX NUT, 3/4"-10UNC	6-0037
35	2	APPROACH RAMP	3-0506
36	2	COTTER PIN, 1/8" X 2"LG.	6-0115
37	2	RAMP PIN WELDMENT	1-0095
38	2	LEVELLING LEG, FRONT-RIGHT, REAR-LEFT	3-0272
39	12	HEX BOLT, 3/4"-10UNC X 2 1/2"LG.	6-0891
40	12	LOCK WASHER, 3/4" I.D.	6-0181
41	2	PULL OUT STEP ASSEMBLY	2-0362
42	2	SAFETY WALK TAPE	1-0749
43	1	ADAPTER TIE BAR, RIGHT SIDE	2-1002

AIR KITS ASSEMBLY



AIR KIT PARTS

ITEM	QTY.	DESCRIPTION	PART #
1	5	FRAME CLIP	6-0500
2	2	TERMINAL BOLT, 3/4"-16M W/ 1/4" NPT F	6-0167
3	3	STREET TEE 1/4"NPT	6-0014
4	1	STREET ELBOW, 1/4" NPT	6-0015
5	2	POLYTUBE STRAIGHT ADAPTER, 3/8" X 1/4"NPT	6-0710
6	1	HOSE 144"W/B	1-0120
7	2	12' COILED HOSE	6-0337
8	2	PLUG, 1/4"NPT	6-0282