

V G L GOLF CART / TURF VEHICLE

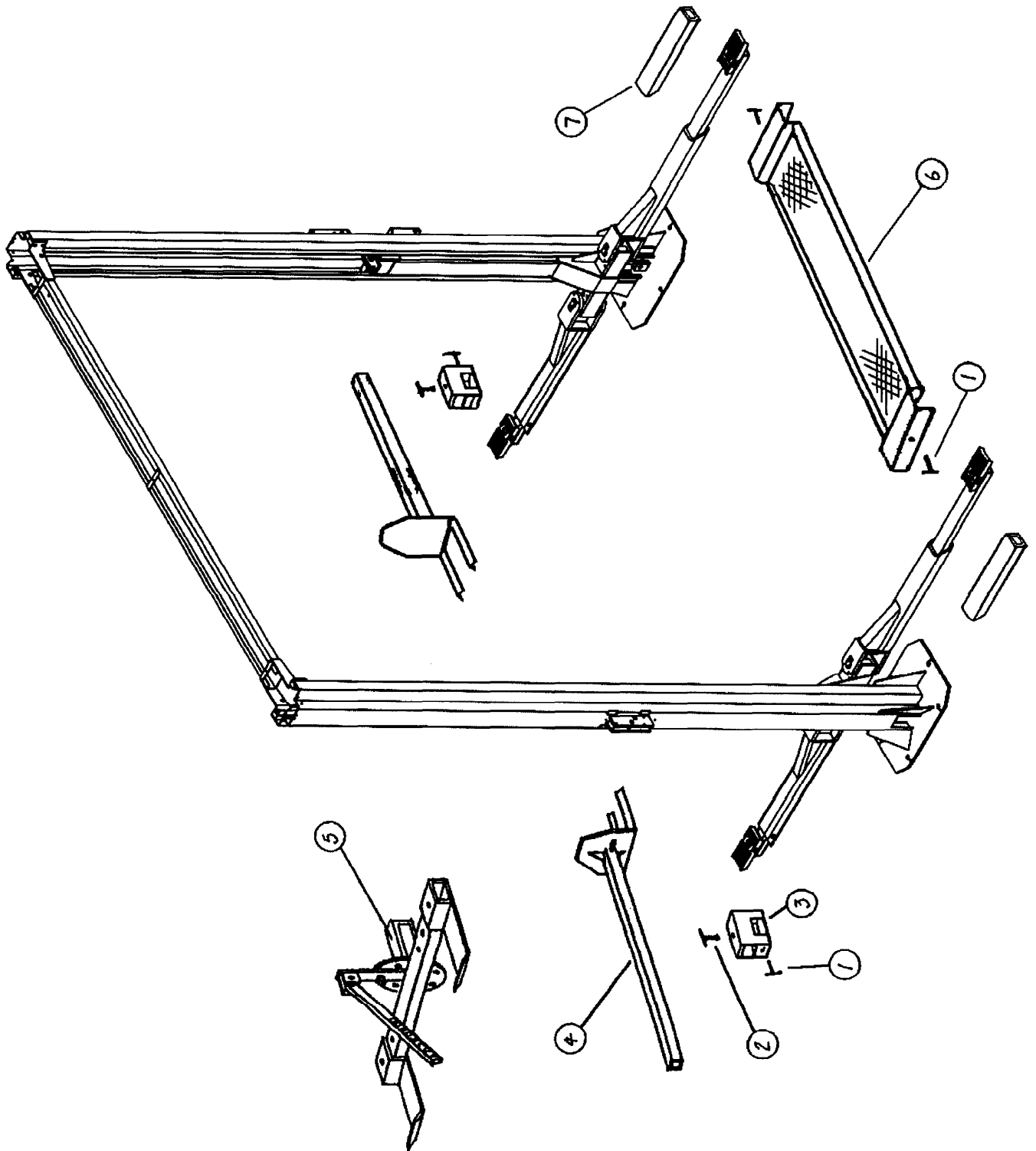
ACCESSORY KIT

Parts

and

Installation Instructions

LIFT ASSEMBLY

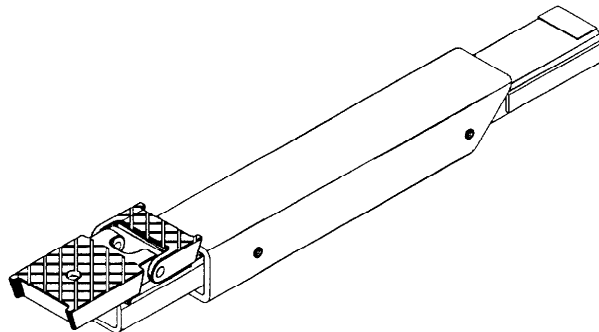


LIFT ASSEMBLY PARTS LIST

ITEM	PART #	DESCRIPTION
1	1-0952	T" LOCKS (SHORT)
2	1-0953	T" LOCKS (LONG)
3	2-0738	FORK BRACKET
4	4-0223	WHEEL FORK WELDMENT
5	4-0267	GANG MOWER ADAPTER ASSY. (OPTIONAL)
6	4-0743	WHEEL TRAY WELDMENT
7	2-1666	ARM EXTENSION

INSTALLATION PROCEDURE

1. Remove the 3/8" x 5/8" lg. hex bolt and 3/8" lockwasher from the side of each outer arm and pull the inner arms out.
2. Slide the arm extension tubes (2-1666) over the front inner arm weldments so that the mitre cut faces away from the adapter (see figure below). Make sure that the setscrews in the arm extension are on the same side of the inner arm as the shim.



3. Slide the two front arms (complete with arm extensions) back into the outer tube weldments. Use the 3/8" set screws found in the accessory box to lock the inner arm in the fully extended position.
4. Push each arm extension back so that it is flush with the outer arm and lock it in place by tightening both of the 1/2" set screws.
5. Rotate the front arms so that they point in the drivethru direction. Place the wheeltray over the front outer arms (or arm extensions) and place it in the desired location. Lock the wheeltray in the desired position using two of the short T-Locks (1-0952) found in the accessory box.
6. Slide one fork bracket over each of the two rear outer arm weldments. Position the brackets in the desired location and lock them in place using two of the short T-Locks (1-0952) found in the accessory box.

7. Slide the two rear arms back into the outer tube weldments and lock them in place using the 3/8" x 5/8" lg. hex bolts and 3/8" lockwashers that were previously removed.
 8. Slide the fork weldments through the fork brackets and position them in the desired location. Lock the fork weldments in place using the two long T-Locks (1-0953) found in the accessory box.
-